

AUTOProPAD™

G3 EVOLUTION



GET MORE DONE.

www.autopropad.com

DECLARATION

1. This manual is intended for use with the AutoProPAD™ Evolution key programmer. No part of this manual shall be reproduced, stored in a retrieval system, or transmitted by any means (electronic, mechanical, photocopying, recording, or otherwise), without the prior written permission of AutoProPAD™.
2. The AutoProPAD key programmer was designed for use by trained security professionals. AutoProPAD™, the manufacturer, and all subsidiaries or authorized distributors (hereafter AutoProPAD™) are not responsible for vehicle damage or loss caused by customer technical issues, vehicle issues, or other factors including, but not limited to improper usage of the tool.
3. Use the device only as described in this manual. The user will be solely responsible for any damages caused by improper usage. AutoProPAD™ will not bear legal responsibility for incorrect usage of the tool.
4. AutoProPAD™ shall not be liable for any incidental or consequential damages, or any economic consequential damages arising from individual users or third parties. Misuse or abuse, unauthorized repairs or modification of the device, will not be the responsibility of the manufacturer or distributor and will result in voiding the warranty.
5. All information, specifications, and illustrations in this manual are based on the latest configurations and functions available at the time of printing. AutoProPAD™ reserves the right to make modifications at any time and without notice.
6. In countries where the trademarks, service marks, domain names, logos, and the name of the company are not registered, AutoProPAD™ claims that it still reserves the ownership of the unregistered trademarks, service marks, domain names, logos, and the company name. All other marks for the other products and the company's name mentioned in the manual will belong to the original registered company. You may not use the trademarks, service marks, domain names, logos, and company name of AutoProPAD™ or other companies mentioned, without written permission from the trademark holder.
7. Please visit autopropad.com for more information about the AutoProPAD key programmer.
8. AutoProPAD™ reserves the right for the final interpretation of the contents of this document.

Table of Contents

Technical Specifications	4
VCI Connection	5
Quick Start	6
Parts List	6
Tablet controls	7
Device Ownership Verification	8
Product Registration	9
Home Screen	10
Settings Menu	13
VCI Setup	14
EEPROM Menu	15
Diagnostics	16
OBDII Protocol Families	17
Vehicle Health	18
Key Programming	20
Programing Options	21
Application Restart	22
Updates Menu	23
Expansion Mode	24
Tech Suport	25
Limited Manufacturer's Warranty	26

Technical Specifications



Operating System: Android 10

Processor: 4 ARM Cortex-A35 1.51 Ghz

Memory: 4GB RAM, 64GB SSD Storage

Display Size: 1024 x 768 Full HD, 8" Sunlight Adaptive

Camera: 8-Megapixel Autofocus w/Flash

Audio: Integrated Microphone & Speaker

Connectivity: Wireless WiFi VCI, USB 3.0 Type-C, Dock Terminal

Battery: 7.3V @ 5000 mAh Lithium-ion

Battery Life: ≈7 hours

Input Voltage: +9-+12V DC

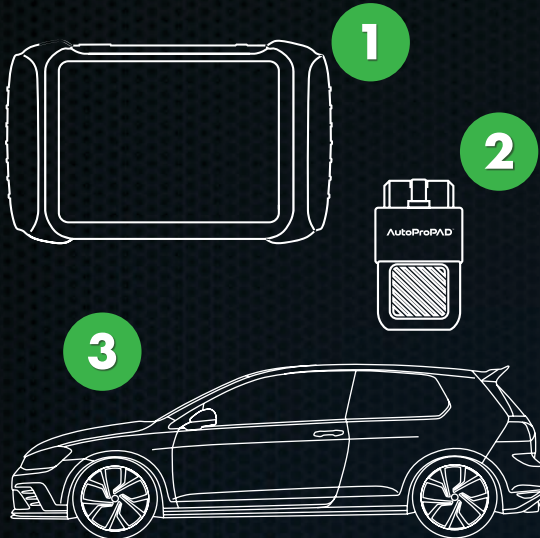
Working Temperature: -13°F to 158°F

Relative Humidity: <90%

Dimensions: 10.6in W x 6.8in H x 1.2in D

VCI Connection

The AutoProPAD G3 Evolution connects directly to the vehicle via wireless VCI as shown in the diagram. Connect wireless VCI directly to the OBDII port on the vehicle. (Please make sure the tablet is connected to WiFi)



1. Connect the VCI

Plug the AutoProPAD G3 Evolution wireless VCI into the vehicle's OBDII-16 diagnostic port.

2. Attach the VCI Adapter

Plug the wireless VCI into the vehicle's OBD2-16 diagnostic port using the hardwired main cable.

3. Connect to the Vehicle

Once the wireless VCI is fully seated in the OBD port, power on the AutoProPAD G3 Evolution to begin vehicle communication.

Quick Start



Charge Your Tablet

Connect the power supply and charge your tablet until the battery indicator is full.



Connect to the Internet

Press the "Settings" button and select "WiFi Networks". Select your preferred network and enter your password. You are now connected to the Internet.



Verify Timezone

Verify that the tablet's time zone is set to your local region. If the time zone is incorrectly set (for example, set to China), the device will not be able to communicate with the server.



Update

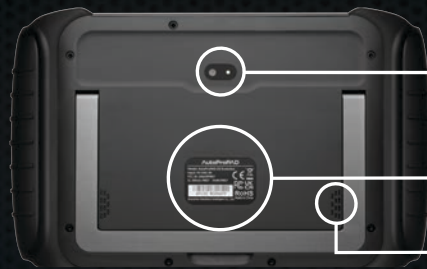
From the home screen, press the "Update" button. From there, press "Update All". Once the updates are downloaded and installed, your AutoProPAD key programmer is ready to use.

FRONT



Power Button

BACK

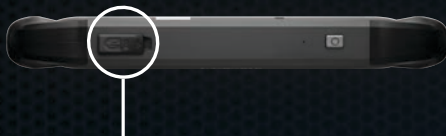


Camera

Serial Number & ID

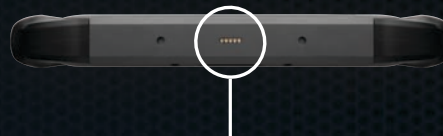
Speakers

Top View



USB 3.0 Type C Interface. Peripheral Data Transmission and Charging Port

Bottom View



Charging Dock Interface:
Pogo-pin connection for the included charging dock. Align the unit onto the dock to charge.

Charging Dock

Provides a fixed station for recharging the G3 Evolution. Mount the dock to your workbench and keep it connected to power using the charging cable. Once the dock is powered, place the tablet onto the dock to begin charging. Keeping the dock in a stable, permanent location ensures the tablet can be returned after each use and remains charged for the next job.



Parts List

Hardware

- [1] Tablet
- [1] WiFi VCI
- [1] Charging Dock
- [1] EEPROM Adapter
- [1] KC100 Chip Precoder
- [1] OBD2 Breakout Box

Other Stuff

- [1] Packing List
- [1] Certificate of Quality
- [1] Carrying Case

Cables, Adapters & Accessories

- [1] USB Type-C to Type-C Charging Cable
- [1] USB Type-C to Type-A Adapter [Connect to PC]
- [1] Mini USB to USB Type-C
- [1] OBDII-16 to DB15 w/12V Passthrough
- [1] OBDII-16 Connector
- [1] EEPROM Interface Board
- [1] SOIC 8-Pin Connector & Rainbow Cable
- [1] Jumper Cables [OBD2 Breakout Box]
- [1] DIP8 White Clip
- [1] 12V DC5521 to Cigarette Lighter [Male] Cable
- [1] Power Charging Block
- [1] 12V AC to DC Power Charger

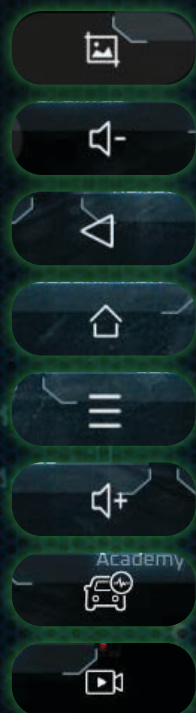
Tablet Controls



Swipe up from the bottom of the screen to access the navigation bar

Function

Description



Take a Screenshot

Decrease Tablet Volume

Return to the Previous Screen

Home Button

Active App Screens

Increase Tablet Volume

Return to Main Menu

Screen Recording

Device Ownership Verification

To protect your AutoProPAD G3 against unauthorized use, the system includes mandatory security features designed to ensure the device remains in the rightful owner's possession.



A PIN code must be created during the initial registration process. This PIN is required each time the tablet wakes from sleep or rest mode and is used to verify the authorized operator.

Your machine must connect to the internet once every 24 hours

This brief connection allows the system to confirm device ownership, enable updates, and maintain access to all programming functions. If a device is reported stolen, connection to the internet allows the system to immediately disable functionality. If the device does not check in within the required interval, it will also disable itself as a security measure.

These safeguards help ensure that only authorized users can operate the AutoProPAD G3 and that lost or stolen equipment cannot be used without permission.

Product Registration

Registering your AutoProPAD G3 helps you stay connected with the latest software updates, feature releases, and important service notices. Registration is optional, but strongly recommended to ensure you receive timely information that keeps your device operating at its best.

Why Registration Matters

- Provides direct access to update alerts, new coverage releases, and technical notices.
- Ensures you receive exclusive promotions and product announcements.
- Helps our support team verify device details more efficiently if assistance is needed.
- Allows you to manage device information under your account for future reference.

How to Register



Scan the QR code to access the official AutoProPAD G3 Online Registration Form.

Home Screen



Function

Description



If you're an automotive locksmith, this is your quickest path to access all key & remote programming functions, but don't be afraid to explore the other settings! If you discover the vehicle has a "check engine" light after programming, use your AutoProPAD to find out why.



Mechanics perform vehicle health before working on any car, to absolve themselves of liability for unrelated issues that existed prior to their services. Have you ever been blamed for a problem that was completely unrelated to your key programming? Cover yourself with a professional pre-scan and post-scan report that can be printed or emailed directly from the tablet.



Before you start key programming, be sure to pair your wireless VCI with your G3 Evolution tablet by tapping on the VCI setup link. Make sure the wireless VCI is paired to the correct serial number of the tablet by tapping on the VCI Connection button.

Function

Description



XTool first made its mark on the automotive world with their diagnostic hardware. That very same technology is packed into your AutoProPAD and is at your disposal with a tap of this button. A "check engine light" will only appear once the vehicle has started, but how can you see it if the customer loses all their keys? What if they blame you for it once your key is made? Use this tool before key programming.



Once you have setup your wireless VCI, you can test your EEPROM adapter to ensure all your EEPROM box is working by tapping on the EEPROM adapter button. This will start the initiation of the box, make sure the VCI is connected to the vehicle, and this will perform a diagnostic test on the vehicle.



Our live technical support team provides guided assistance for diagnostics, programming procedures, update issues, and general device operation. To ensure the most effective support, please be with the vehicle when you call and review all available reference materials before reaching out. Our tech support consists of experienced locksmith professionals who actively work in the field, so having accurate details ready helps us assist you quickly. Active subscribers can contact Technical Support at (888) 988-6865, Monday–Friday, 8:30am–5:00pm PST.



Bulletin Board (Coming Soon!)

Platform to share information with the AutoProPAD Locksmith community

Function

Description

SUPPORTED
VEHICLES

Select the Supported Vehicles quick link to check if the vehicle you are programming is supported. The supported vehicles list is updated regularly and whenever new data becomes available.

SETTINGS

Change the machine language, units, screen brightness, connect to WiFi, and so much more. Try programming a car in French. Teach yourself the Metric system. If you're from Quebec, you can brush up on your English and learn to convert meters to Freedom Units.

UPDATES

145

Click this button to install the latest vehicle coverage, feature expansions, and system improvements. With an active subscription and a stable hotspot connection, your machine can download every new update as soon as it's released. If your subscription has expired, contact your preferred AutoProPAD distributor to reactivate it. Updates are released regularly—keep your device current to maintain full functionality. All active subscriptions include access to our live, U.S.-based technical support team.

RENEW SUBSCRIPTION

If your yearly subscription has lapsed, it is simple to renew your yearly subscription with tap of a button on the "RENEW SUBSCRIPTION" button. This will send you to the Auto Key Pros website to renew your subscription, just follow the directions on the website or contact your local distributor for assistance.

AutoProPAD
Academy™

Coming
Soon

AutoProPADAcademy (Coming Soon!)

Platform to share tips and tricks from the AutoProPADlocksmith community

Settings Menu



Language

Select preferred language



Unit

Select preferred unit type



USB Setting

Select between Data transfer mode or Expansion mode



Sound & Display

Adjust Volume and Brightness level



Business Card

Provide your business information, which will be included in your generated PDF report.



Account Information

View your Username, Account Email address, and reset your account password.



Subscription

View AutoProPAD's serial number, subscription start and expiration date



About

View current APP version, serial number, and Offline time remaining. Also, there is a link to User Agreement and Privacy Policy

VCI Setup

CONNECTION



Connection Method:
WiFi

Shows serial # of
AutoProPAD connected

SELF-TEST



Connect VCI box to an
external 12V power supply
and tap on 'Ready to
Self-test' (See diagram)

EEPROM Menu

Tap on
EEPROM adapter



Tap on EEPROM



Other options:

- MCU
- Read pin code
- Data initialization
- Immo data repair/write start
- Mileage adjustment
- Other functions



Selecting EEPROM
adapter option



Select by series

Selecting KC501
X2Prog option



Select by series



Select by brand



Diagnostics



Tap on DEMO



Automatic Detection



Confirm Vehicle Profile



Tap on OBDII



* Select from various types of scans



System Selection



Note: Americas, Asia, Europe will show manufacturers by continent



* Select from various Special Functions:
TPMS Reset, EEPROM, BMS Reset, Odometer, Throttle, Rain/Light Sensor, HV battery, Write VIN, FRM Reset, SAS, Oil Reset, EPB, A/C Relearn, Headlight, SRS, VGT Relearn, Suspension



Quick Read Code



Read disclaimer and tap 'Agreed' button



Select make of vehicle to begin key programming process



Quick Clear Code

* See the following page for further details

OBDII Protocol Families



Auto Scan

Cycles through all supported protocols until it finds the right one.

SAE J1850 PWM

Read VIN, P-codes, comm checks in older ford cars.

HELP

Explains which protocol matches which vehicle families and why a vehicle might not connect

ISO 15765-4

Modern standard. All cars 2008 and newer (USA) must support CAN

SAE J1850 VPW

Read VIN, P-codes, comm checks in older GM cars.

ISO 14230-4

Successor to ISO 9141-2
Used heavily on: Honda/Acura, Toyota/Lexus, Hyundai/Kia and Some European vehicles

Vehicle Health



Pre-Scan

Conducts a full diagnostic scan before any programming or repair work begins.



Post-Scan

Performs a second full diagnostic scan after programming or repair is completed.



Pre-Post Scan Report List

Compiles both Pre-Scan and Post-Scan results into a single, organized report.



Data Playback

Generates a detailed report of all diagnostic findings.



Diagnosis Report

Allows technicians to review previously recorded diagnostic sessions.

Special Functions



Instrument Cluster

Calibrates or resets instrument panel functions.



EEPROM

Reads or writes EEPROM data for immobilizer and key-related functions.



Odometer Read

Reads mileage stored in the vehicle modules.



Rain/Light Sensor

Calibrates rain and ambient-light sensors after service.



Write Vin

Writes or corrects VIN data in supported modules.



SAS (Steering Angle Sensor)

Calibrates the steering angle sensor after alignment or suspension work.



EPB (Electronic Parking Brake)

EActivates electronic parking brake service mode for brake maintenance.



Headlight

Reads or writes EEPROM data for immobilizer and key-related functions.



VGT Relearn

Performs turbocharger relearn after repair or replacement.



TPMS Reset

Relearns the TPMS system after adjusting pressures or servicing sensors.



BMS Reset

Resets battery management settings after replacement.



Throttle

Runs throttle body relearn for proper idle and response.



HV battery

Performs diagnostics or resets on high-voltage battery systems.



FRM Reset

Resets footwell module to restore body electronics.



Oil Reset

Performs electronic headlight alignment or module calibration.



A/C Relearn

Calibrates HVAC actuators for correct airflow and temperature.



SRS

Resets the airbag control module and clears SRS faults.



Suspension

Performs electronic headlight alignment or module calibration.

Key Programming



Select Car Make

Choose the vehicle manufacturer from the on-screen list to load the appropriate key programming database.



Select by Vehicle

Select by vehicle, type, function, or use Auto Identify (when available) to automatically detect supported vehicle information.



Select Model

Choose the specific vehicle model from the list to access model-specific programming functions.



Select Year Range

Select the correct production year range to ensure compatibility with the vehicle's immobilizer and electronic systems.



Continue To Programming

Confirm that all vehicle details and key specifications are accurate, and tap "continue to programming" to begin the programming procedure.



Select Key Type

Choose the correct key type from the on-screen options to load the appropriate programming functions for that key system.



Turn Ignition ON

Ensure the ignition is switched **ON** before continuing. The system cannot establish communication or begin programming if the ignition is **OFF**.



Select Programming Option

Choose the required programming operation, such as Add Key, All Keys Lost, Number of Keys, or other available functions for the selected vehicle.

View next page for more info

Programming Options



View Number of Keys

Displays the number of keys currently programmed to the vehicle's immobilizer system. Use this to confirm existing keys before performing programming tasks.

Add Key Procedure

Follow the on-screen instructions to add a new key. Ensure the correct key type is present and that all required steps are completed in the order shown.

All Keys Lost Procedure

Used when no working key is available. Follow the guided instructions to initialize the immobilizer and program new keys from a lost-all-keys state.

ESCL Learn (ESCL Replaced)

Initializes or programs a new Electronic Steering Column Lock (ESCL) module after replacement. This process allows the immobilizer and vehicle control modules to recognize and authorize the new steering lock.

ESCL Learn (BCM Replaced)

Re-links the Electronic Steering Column Lock (ESCL) when the Body Control Module (BCM) has been replaced. This ensures the ESCL and BCM share matching security data so the immobilizer system can operate correctly.

Module Resync

Resynchronizes security data between key immobilizer modules (such as ECM/PCM, BCM, ESCL, or smart key unit). Used when communication or authorization mismatches occur, especially after battery loss, module replacement, or failed programming attempts.

Function Introduction

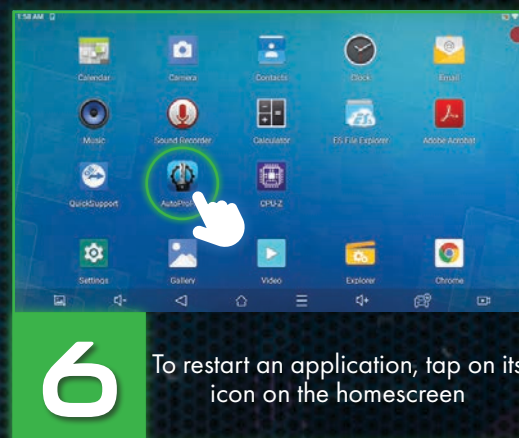
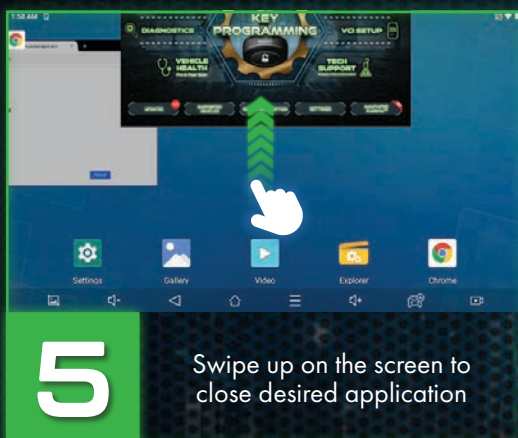
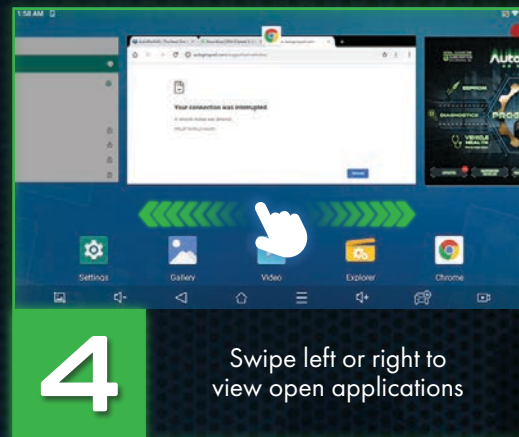
Displays detailed information about the available key programming functions for the selected vehicle. Often includes explanations, prerequisites, and notes specific to that model before you begin programming.

Follow directions as provided for next steps.

Note: Process will differ depending on make, model and year of vehicle

Application Restart

If an application is problematic or fails to respond in a timely manner, follow these steps to quickly restart it.



Updates Menu



Software Updates

Lists all available update packages for your immobilizer, diagnostics, and system modules. Each entry shows the module name, version number, and release date so you can verify what's being installed.

Percentage Completed

Displays the live progress bar for the active update, indicating how much of the download or installation process has finished.

Click here to Update

Shows the current state of the update for each module. Buttons change dynamically to indicate:

- Downloading
- Installing
- Complete

Tapping the button starts or resumes the selected update when required.

Update Tips

- Keep the device connected to a stable Wi-Fi network before starting any updates.
- Avoid powering off or disconnecting the tool while downloads or installations are in progress.
- If an update appears stuck, return to the Updates Menu and refresh the page.
- Install all available updates to ensure the newest vehicle coverage and system improvements.
- After all updates are marked Complete, reboot the device for best performance.

Expansion Mode

Expansion Mode must be enabled on the AutoProPAD before connecting the KC100. This mode allows the device to communicate with the KC100 hardware for key precoding operations.

After precoding is complete, the device must be returned to Data Transfer Mode to restore normal charging and file-transfer functionality.

Mode switching is a temporary requirement and will be automated in a future software update.



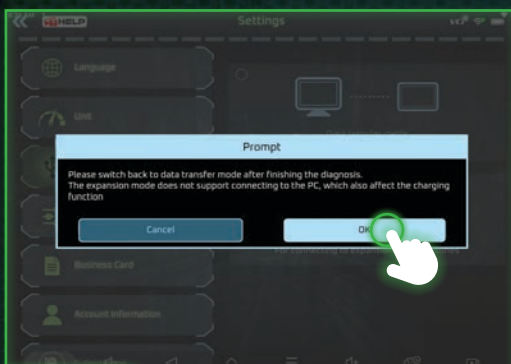
1

Tap the "Settings" button on the apps homescreen



2

Select (A) "USB Setting"
Then (B) "Expansion Mode"



3

A prompt will appear Read and press the "OK" button



4

Revert to data transfer mode by following steps 1 & 2 and selecting "Data Transfer Mode"

Tech Support

Before connecting with one of our Tech Support Representatives, please check our Supported Vehicle spage to see if the AutoProPAD supports your vehicle.



SupportedVehicles.com

You can also watch support videos for further assistance.



@AutoProPADProgrammer

If you have done the above and still need assistance, please call us at:
(888) 988-6865

Or submit your inquiry to us:
www.llwrc.com/tech-support

**Active subscription required*

Limited Manufacturer's Warranty

LIMITED MANUFACTURER'S WARRANTY

AutoProPAD™ warrants the AutoProPAD Core/ AutoProPAD G3 Evolution in compliance with this certificate, in effect for 365 days from the date of purchase. In order to redeem the benefits provided to you by this warranty, this documentation must be provided in tandem with a verifiable proof of purchase, as issued by an authorized AutoProPAD Core/ AutoProPAD G3 Evolution distributor. This warranty covers the free repair or replacement of any parts deemed faulty, as a result of manufacturing defects. For the most current version of this agreement, please visit autopropad.com

This warranty does NOT Cover:

1. Damage or malfunctions caused by natural disasters or acts of God (lightning, fire, flood, earthquakes and other external causes).
2. Theft, misplacement, reckless, abusive, willful or intentional conduct associated with handling and use of the AutoProPAD Core/ AutoProPAD G3 Evolution.
3. Faulty installation, repair, or maintenance by anyone other than an AutoProPAD Core/ AutoProPAD G3 Evolution authorized service provider.
4. Damage to, or failure of unauthorized aftermarket upgrades or add-on accessories.
5. Consumer replaceable or consumable items, including but not limited to: cords, adapters, EEPROM clips, AC power adapters, and lithium-ion battery.
6. Extreme environmental conditions (including extreme temperature or humidity) leading to problems such as external condensation, overheating, and mold.
7. Usage outside of the permitted and intended uses, as described by the manufacturer.
8. Malfunctions caused by improper operation by the machine operator.
9. Damage caused by insect infestation or rodents.
10. Any machine whose serial number has been altered, defaced, or removed.
11. Any machine whose software has been modified or altered beyond the normal scope of use.
12. Damage that is secondary, or any damage that would be ordinarily covered under a primary insurance policy (e.g., car accident causes damage to the AutoProPAD Core/ AutoProPAD G3 Evolution).
13. Protection against any other act or result not covered by this plan.
14. Any resultant damage to the AutoProPAD Core/ AutoProPAD G3 Evolution that arises from one or more conditions described above.

Except for the above cases, all qualifying malfunctions are eligible for free service within the warranty period. To assure your request for service is handled efficiently, please contact AutoProPAD™ customer service prior to sending us any product. We will issue you a Repair Authorization Form that must be included when shipping your product to us. Failure to do so will result in service delays.

Shipping and Handling Policy: AutoProPAD™ will contribute to the cost of return shipping from our repair center, at our discretion, and only within the Continental United States. After a preliminary Assessment, if your machine malfunction is determined to be not covered by this warranty, the entirety of all shipping costs will become the user's obligation. Failure to rectify any outstanding shipping or repair charges will result in return shipping delays.

How to Obtain Service and Support

You may obtain service by accessing our website, www.llwrc.com, or by calling us at (888) 816-1046. Regular business hours are Monday through Friday from 8:30am to 5:00pm Pacific Standard Time.

To receive service or support, you agree to comply with each of the terms listed below.

- I. You will provide a copy of this warranty and a copy of your purchase, exchange, and service receipts, if requested.
- II. You will provide, to the best of your ability, information about the symptoms and causes of your issues with the AutoProPAD G3 Evolution.
- III. You will respond to requests for information, including but not limited to: your product serial number, version of the software installed, any peripheral devices connected or installed on the AutoProPAD G3 Evolution, any error messages displayed, the actions which were taken before the AutoProPAD G3 Evolution experienced the issue and the steps taken to attempt resolution of the issue.
- IV. You will follow instructions we give you, including but not limited to refraining from sending us products and accessories that are not subject to repair or replacement service (as listed above and packing the AutoProPAD G3 Evolution in accordance with the shipping instructions we will provide to you upon service agreement.
- V. Keep your original packaging! In the event your machine must be shipped to our repair facility, there is no safer method to ensure that the machine will arrive intact and undamaged, than if it ships in its original box. Damages incurred during shipping due to improper packaging, will be the customer's sole responsibility.
- VI. You will be required to sign a service order disclaimer or other service order terms to obtain repairs or a replacement device. This service order disclaimer or other service order terms do not form a part of this warranty and are a separate legal document.
- VII. After securing permission to send in your machine, please insert your completed Repair Authorization Form inside The box and ship to:

AutoProPAD™ Warranty and Repair Center – 5275 S. Arville St, Suite 328, Las Vegas, NV 89118

THE LIMITED MANUFACTURER'S WARRANTY IS EXPRESSLY GIVEN AND ACCEPTED IN LIEU OF ALL OTHER WARRANTIES, EXPRESS OR IMPLIED, INCLUDING, WITHOUT LIMITATION, ANY WARRANTY OF MERCHANTABILITY OR FITNESS FOR A PARTICULAR PURPOSE. TO THE EXTENT THAT THEY CANNOT BE DISCLAIMED, THE IMPLIED WARRANTIES ARE LIMITED IN DURATION TO THE LIFE OF THE EXPRESS WARRANTY. AUTOPROPAD™ SHALL HAVE NO LIABILITY FOR INCIDENTAL AND CONSEQUENTIAL DAMAGES THAT ARISE FROM THE SALE OF AUTOPROPAD™ PRODUCTS OR ARE A RESULT OF A BREACH OF THE LIMITED MANUFACTURER'S WARRANTY REPRODUCED ABOVE. THE REMEDIES SET FORTH IN THE LIMITED MANUFACTURER'S WARRANTY ARE THE PURCHASE'S SOLE AND EXCLUSIVE REMEDIES, AND THE ENTIRE LIABILITY OF AUTOPROPAD™ FOR ANY BREACH OF THE LIMITED MANUFACTURER'S WARRANTY. SOME STATES/JURISDICTIONS DO NOT ALLOW FOR THE DISCLAIMERS, LIMITATIONS, AND EXCLUSIONS DESCRIBED ABOVE, AND AS A RESULT, THEY MAY NOT APPLY TO YOU. THIS WARRANTY GIVES YOU SPECIFIC RIGHTS, AND YOU MAY ALSO HAVE OTHER LEGAL RIGHTS WHICH MAY VARY FROM STATE TO STATE OR FROM ONE JURISDICTION TO ANOTHER. NO DISTRIBUTOR, DEALER, SALES REPRESENTATIVE NOR ANY OTHER PERSON HAS BEEN AUTHORIZED TO MAKE ANY AFFIRMATION, REPRESENTATION OR WARRANTY REGARDING THE PRODUCT, OTHER THAN THOSE CONTAINED IN THIS LIMITED MANUFACTURER'S WARRANTY, AND IF MADE, SHALL NOT BE ENFORCEABLE AGAINST AUTOPROPAD™. AUTOPROPAD™ RESERVES THE RIGHT TO MODIFY THESE TERMS AND CONDITIONS AT ANYTIME; IT BEING UNDERSTOOD THAT SUCH MODIFICATION WILL NOT ALTER THE LIMITED MANUFACTURER'S WARRANTY CONDITIONS APPLICABLE TO THE PRODUCTS SOLD WHILE THESE TERMS AND CONDITIONS ARE IN EFFECT.



AUTOProPAD G3™

Visit supportedvehicles.com for the most current list of supported vehicles, videos, tech tips, tutorials, and so much more!

Technical support is also available by telephone for all AutoProPAD users with active subscriptions.

For crowdsourced programming assistance from members of the AutoProPAD community, including our official technical support staff, join us on Facebook! You'll also receive information on the very latest machine updates.

 www.facebook.com/groups/autopropad

 [@AutoProPADProgrammer](https://www.youtube.com/@AutoProPADProgrammer)

Tech Support: (888) 988-6865
Email: customerservice@autopropad.com
Website: www.autopropad.com